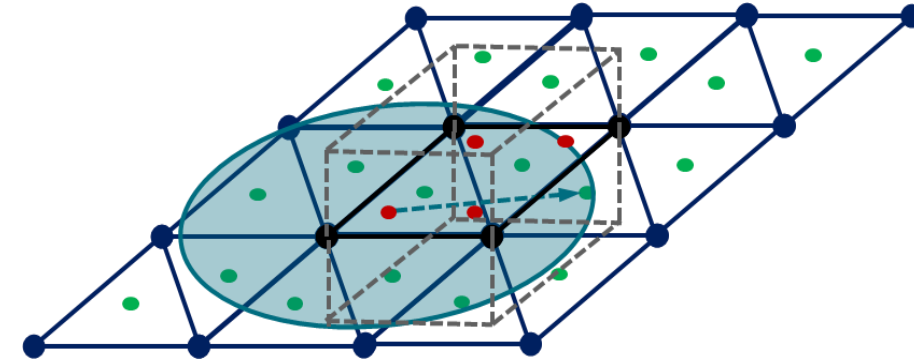


Infoday Automotive and Aerospace Applications, Berlin, GER, 2022

Closed Process Chain for Fiber-Reinforced Composites in LS-DYNA using Envyo



Tolga Usta, DYNAmore GmbH

Christian Liebold, DYNAmore GmbH

A part of the:



Agenda

 Overview

Mapping Options for Composites

Selected Further Capabilities

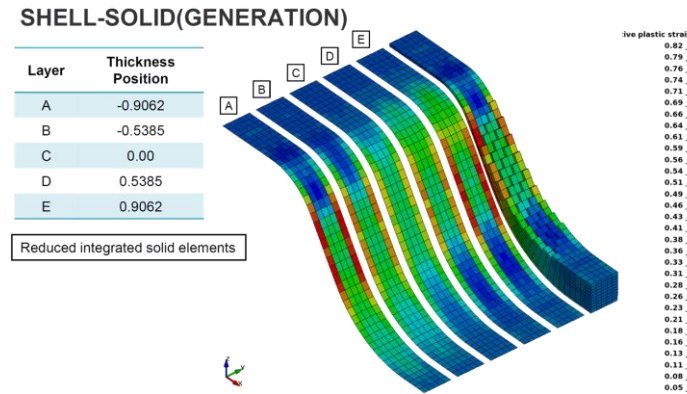
Future Development Plan

Questions & Answers

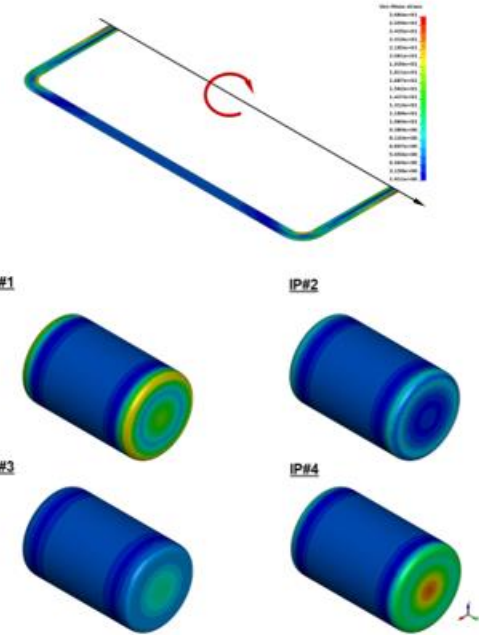
Envyo Overview



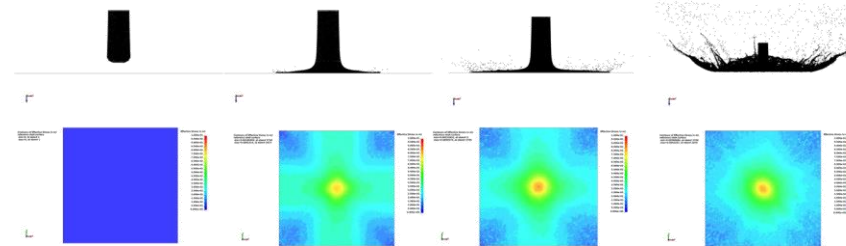
- ENVYO is a multi-purpose mapping tool dedicated to LS-DYNA.
- Standard applications covered by ENVYO:
 - Fiber Reinforced Plastics
 - Metal Forming
 - Bake Hardening
 - Image Processing
 - Particle methods and Temperature mapping
- We integrate new processes based on customer request.



Solid Mesh Generation



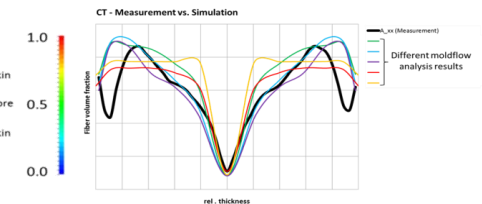
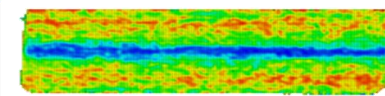
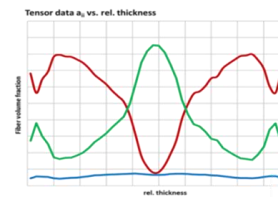
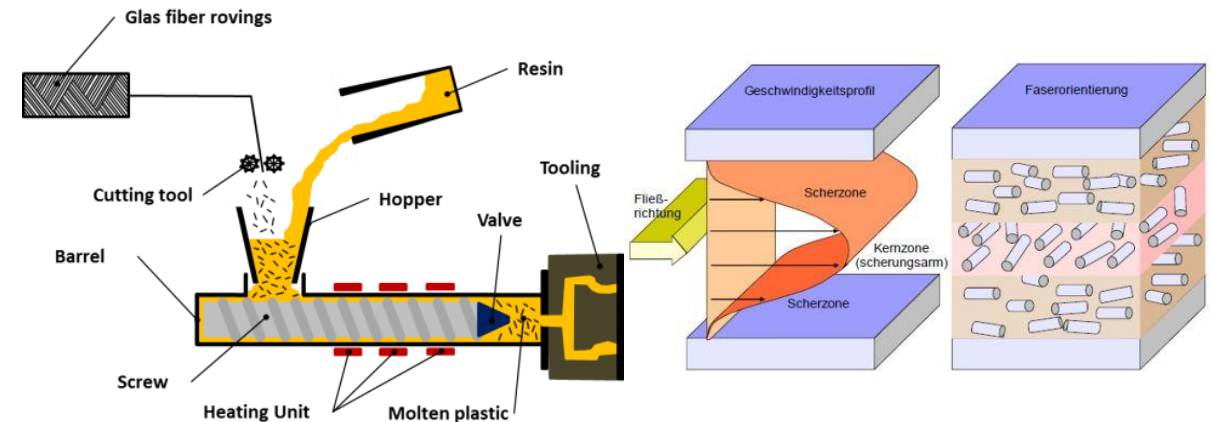
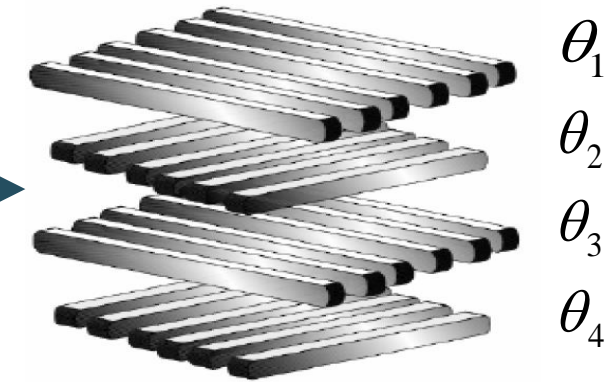
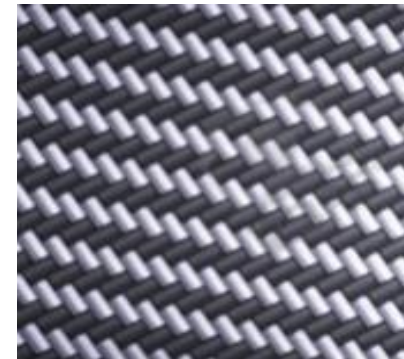
Axisymmetric Mapping



Particle Methods

Composites in General

- Composite materials are usually inhomogeneous and non-isotropic.
 - Highly direction dependent characteristics in both in-plane and through the thickness
- Relative complex properties to map
 - Discontinuous layers
 - Undulation of fibers
 - Varying fiber directions/orientations
- Different modeling approaches
 - Fibers as beams/shells
 - Element types and formulations
 - Homogenized layer stacking in one shell element
 - Shell/Solid element discretization of SFRP

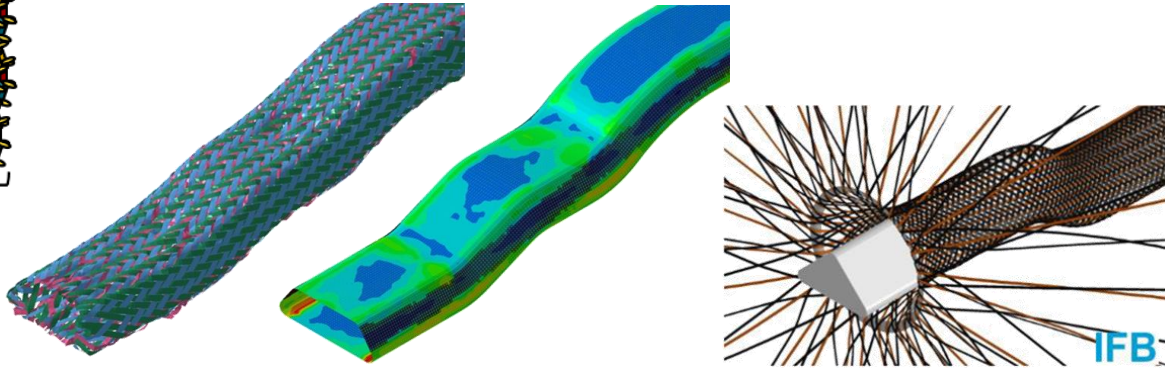
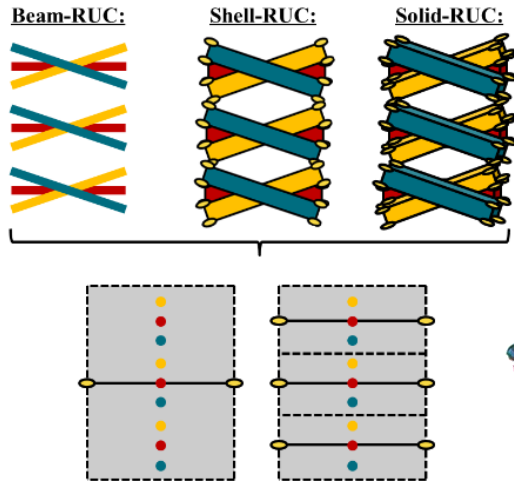


Mapping Options for Composites



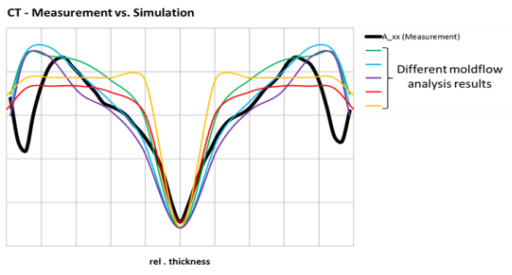
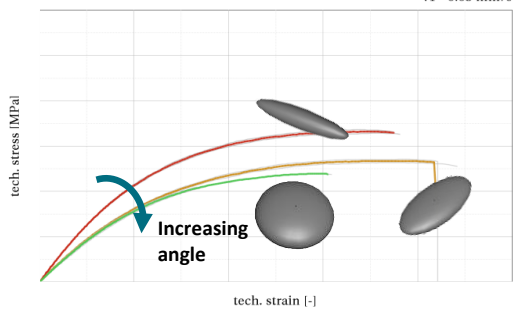
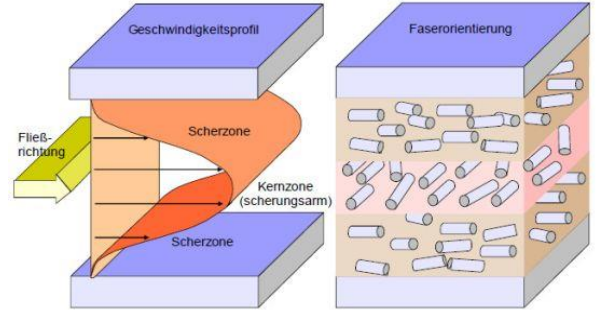
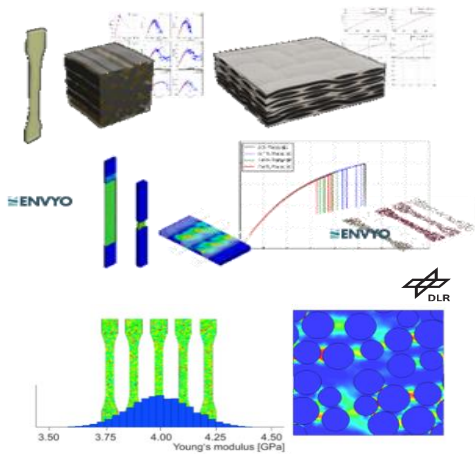
- BEAM – SHELL
- BEAM – SOLID
- SHELL – SHELL
- PLYBOOK – SHELL

CFRP



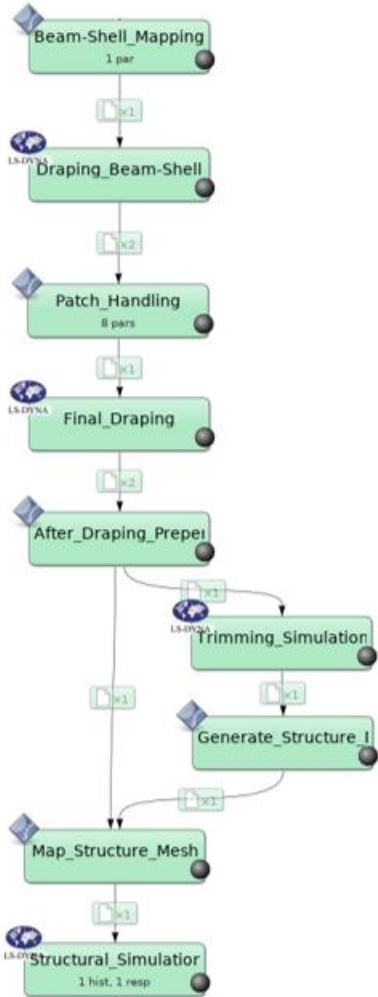
- MOLDEX3D – SHELL
- MOLDEX3D – SOLID
- MOLDFLOW – SHELL
- MOLDFLOW – SOLID
- 3DTIMON – SHELL

SFRP

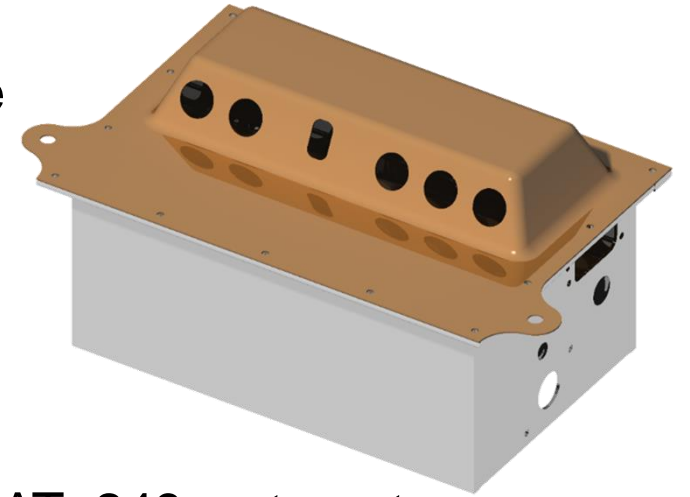


- STOCHASTIC INITIALIZATION

Mapping CFRP Properties



- Use Case : Virtual DFA process chain prototype
- We will focus on :
 - BEAM – SHELL
 - SHELL – SHELL
 - PLYBOOK – SHELL mapping options with *MAT_249 as target material model

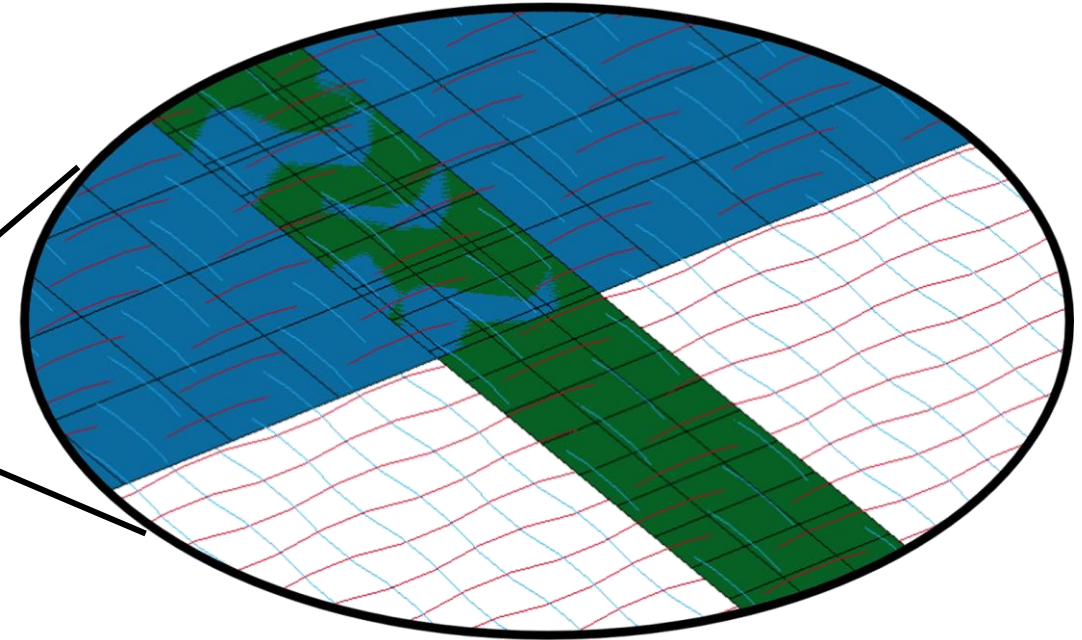
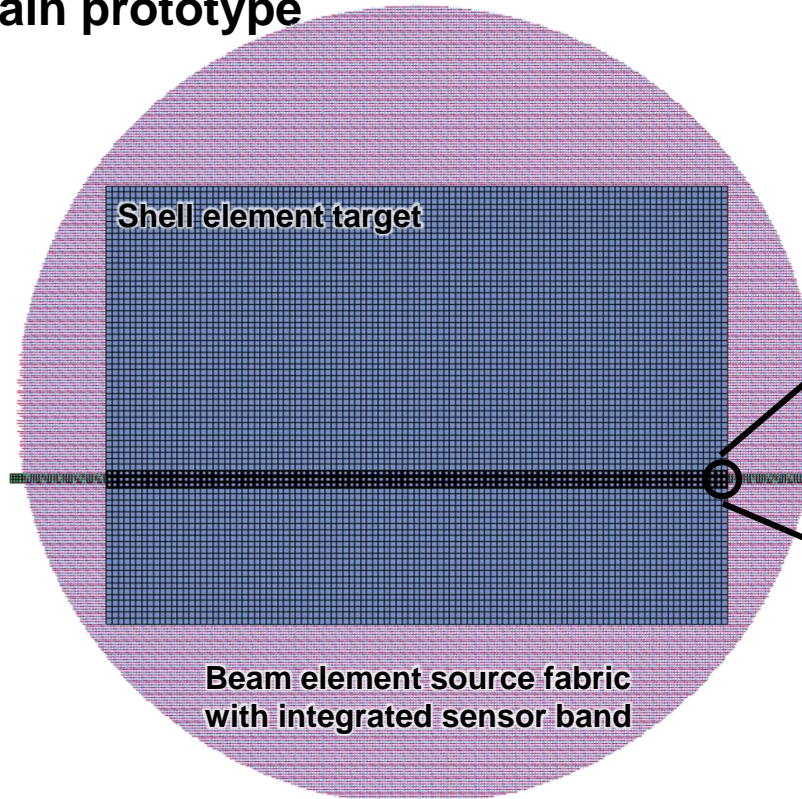
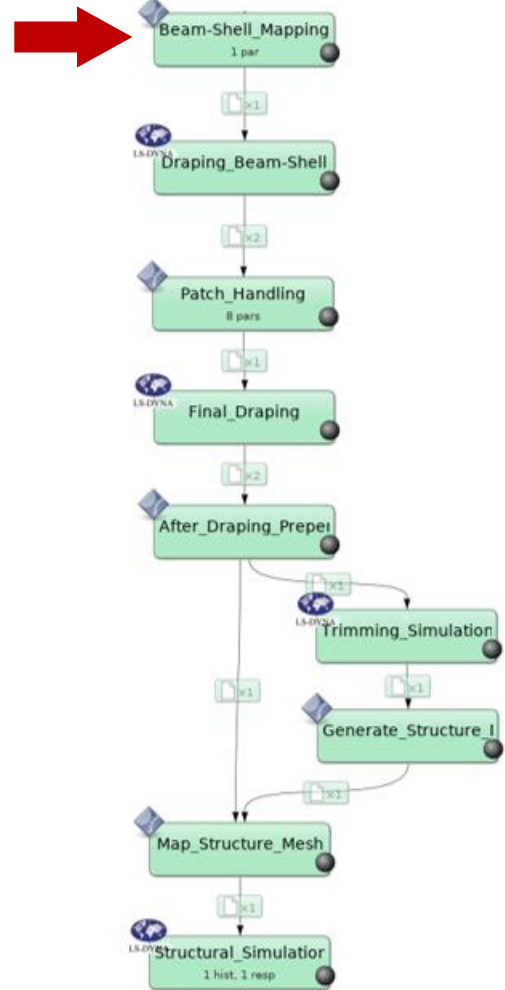


ARENA2036



Mapping CFRP Properties

Virtual DFA process chain prototype



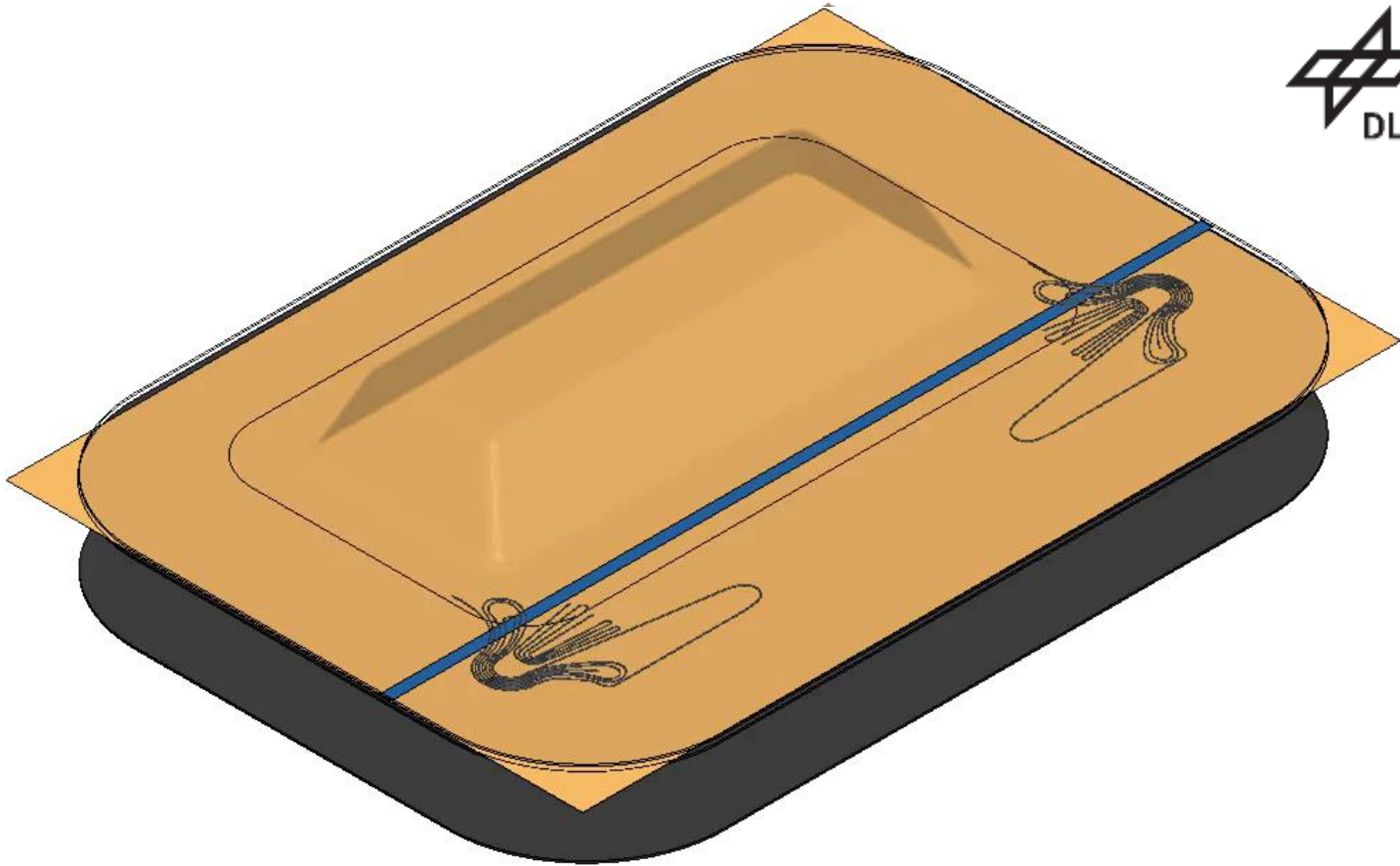
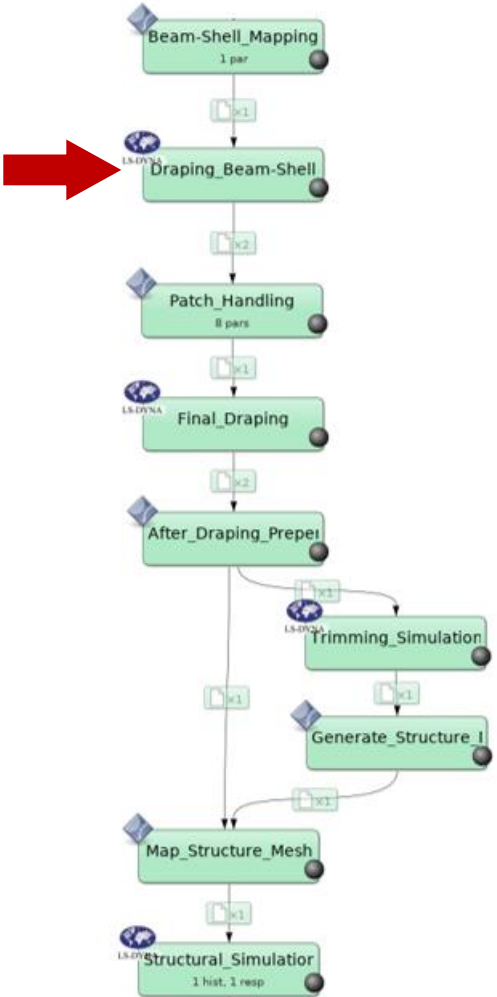
- ENVYO=BEAM-SHELL, NTHICK=5
- *ELEMENT_SHELL_COMPOSITE
- *MAT_249
- Clustering sensor band elements

Card 9. This card is optional.

Flag	Description	Variables	# History Var
a_1	Fiber direction (in global coordinates)	m_1^g, m_2^g, m_3^g	9
a_2	Fiber direction (in material coordinates)	m_1^m, m_2^m, m_3^m	6

Mapping CFRP Properties

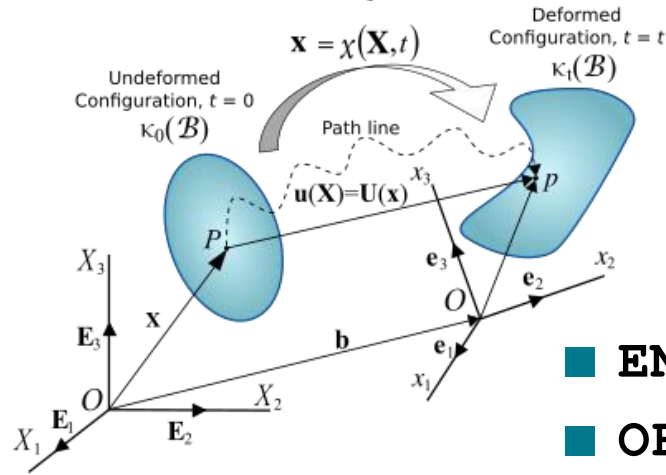
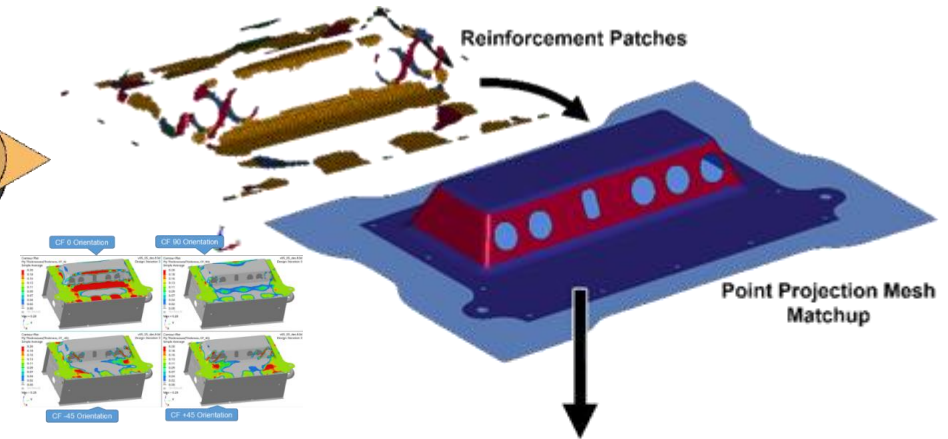
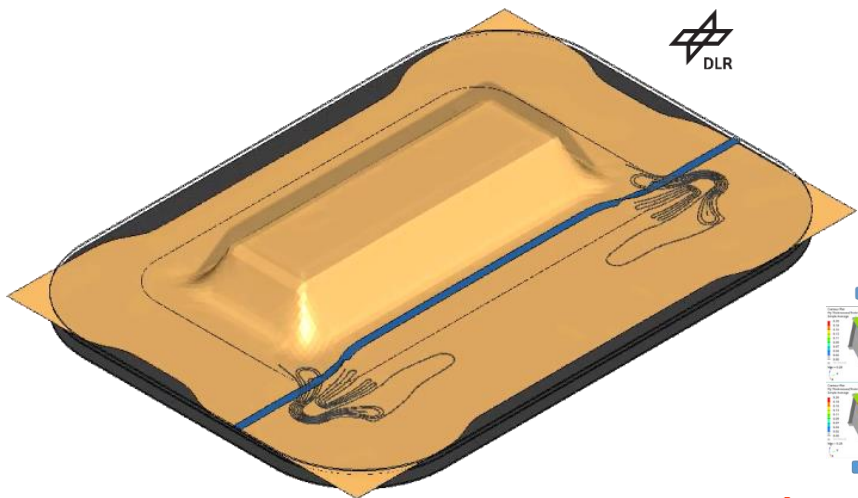
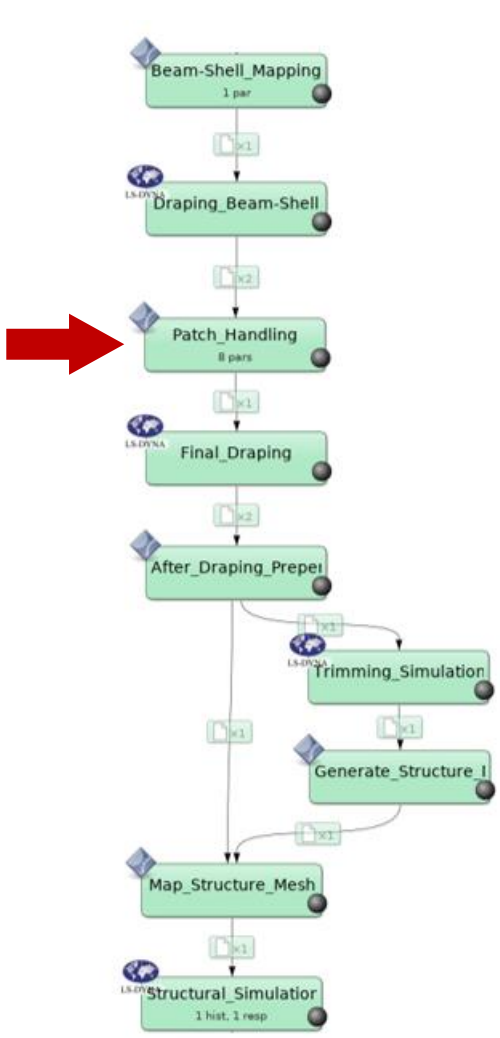
Virtual DFA process chain prototype



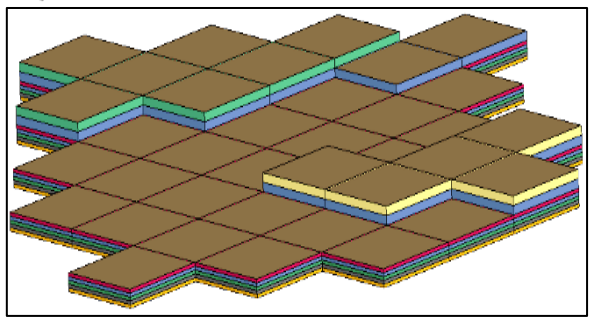
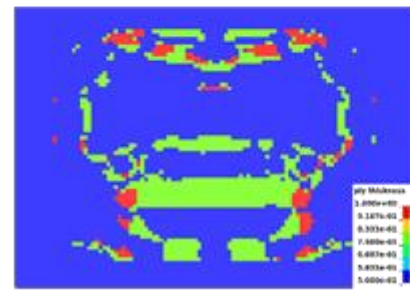
* TFP patches according to an optimization run

Mapping CFRP Properties

Virtual DFA process chain prototype



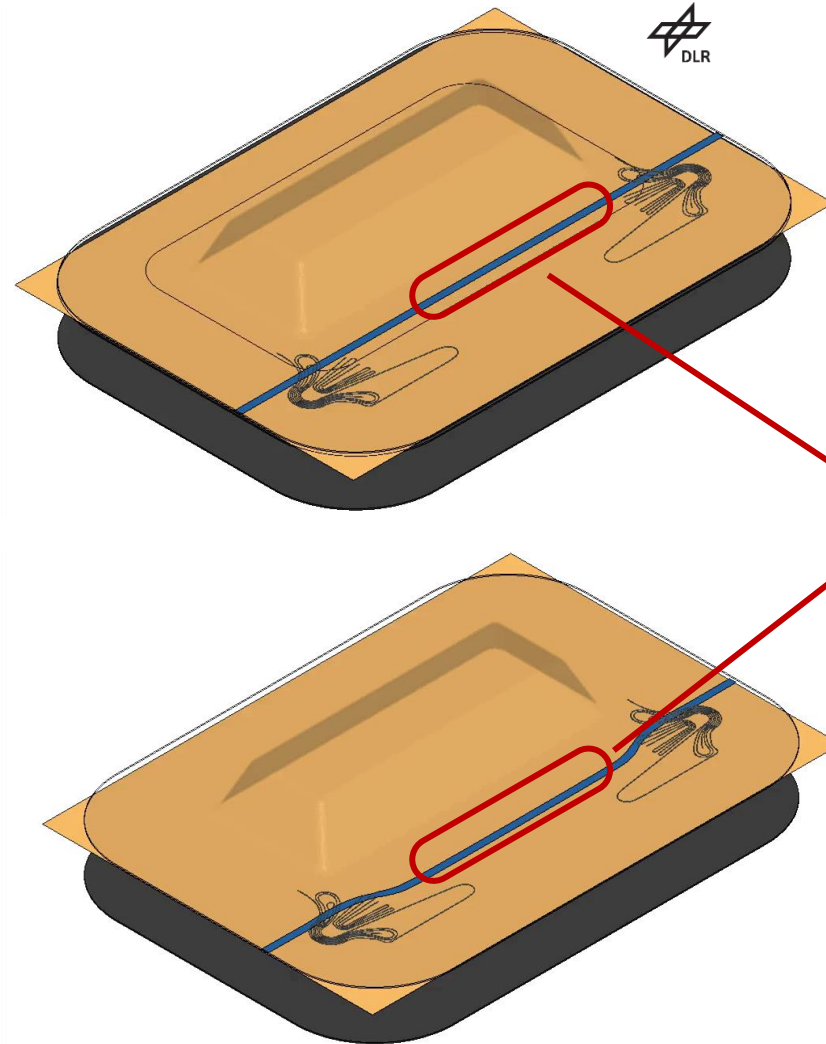
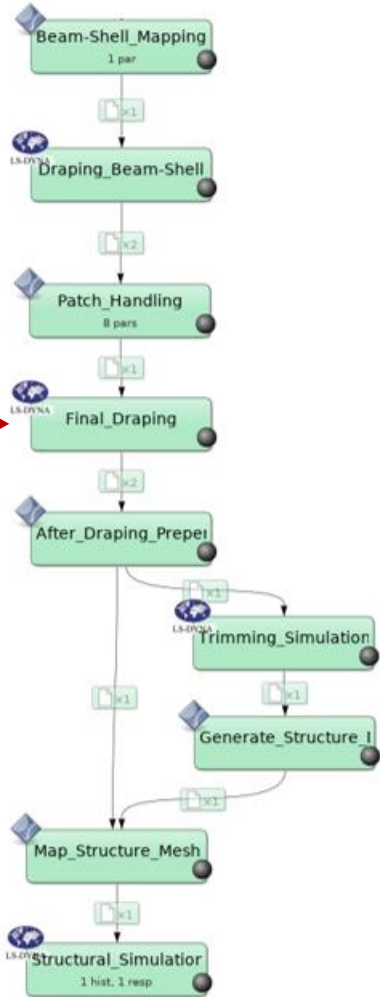
ALTAIR



- ENVYO=PLYBOOK-SHELL
- OFFSET_OPTION=FLAT_LOWER
- *ELEMENT_SHELL_THICKNESS_OFFSET_COMPOSITE

Mapping CFRP Properties

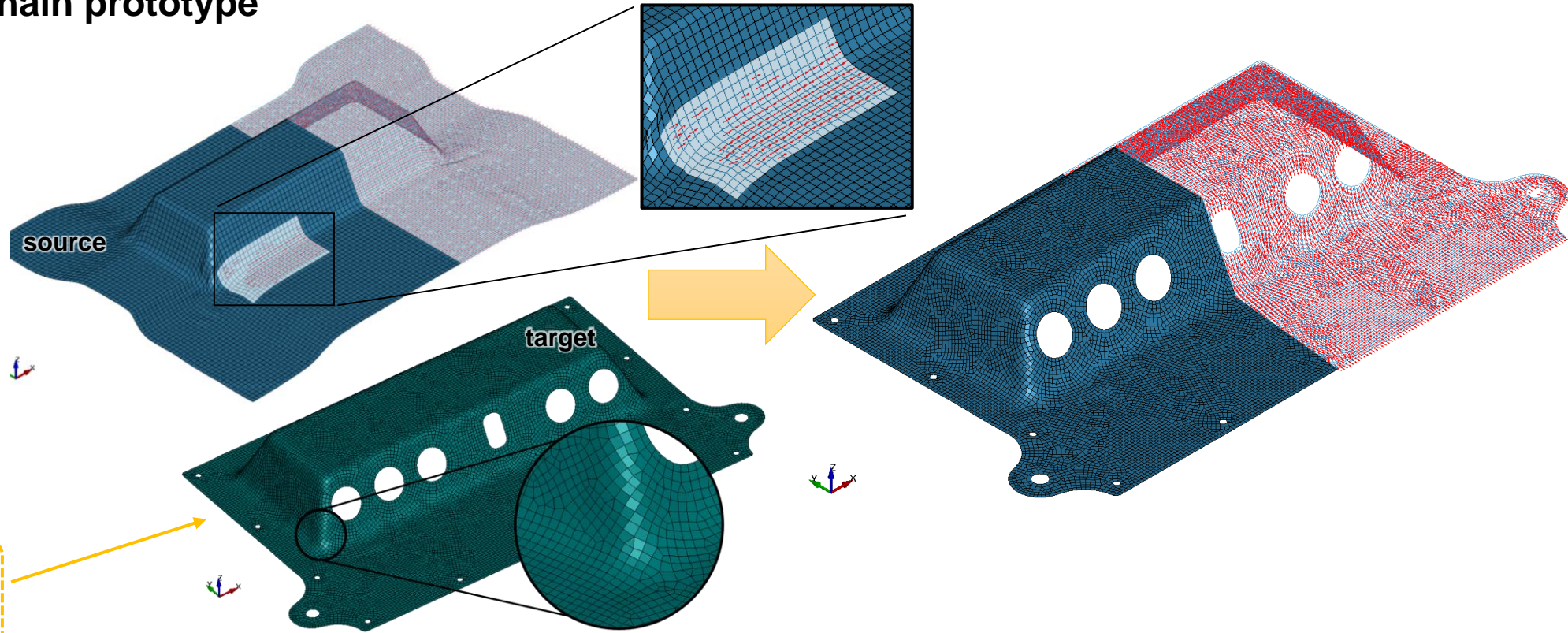
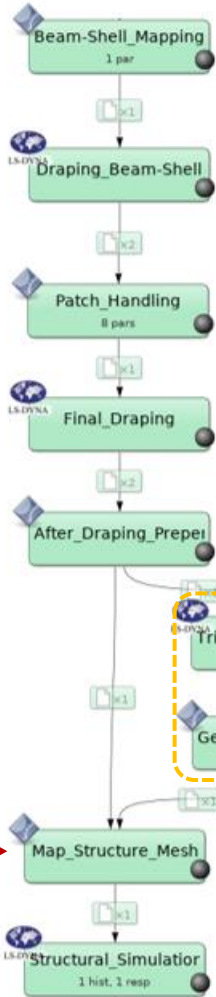
Virtual DFA process chain prototype



✓ Considering undeformed/deformed configuration differences leads to correct sensor band positioning

Mapping CFRP Properties

Virtual DFA process chain prototype



■ ENVYO=SHELL-SHELL

■ *MAT_249

■ *ELEMENT_SHELL_THICKNESS_OFFSET_COMPOSITE

➤ The structure is ready for the consecutive structural simulation.

Mapping CFRP Properties

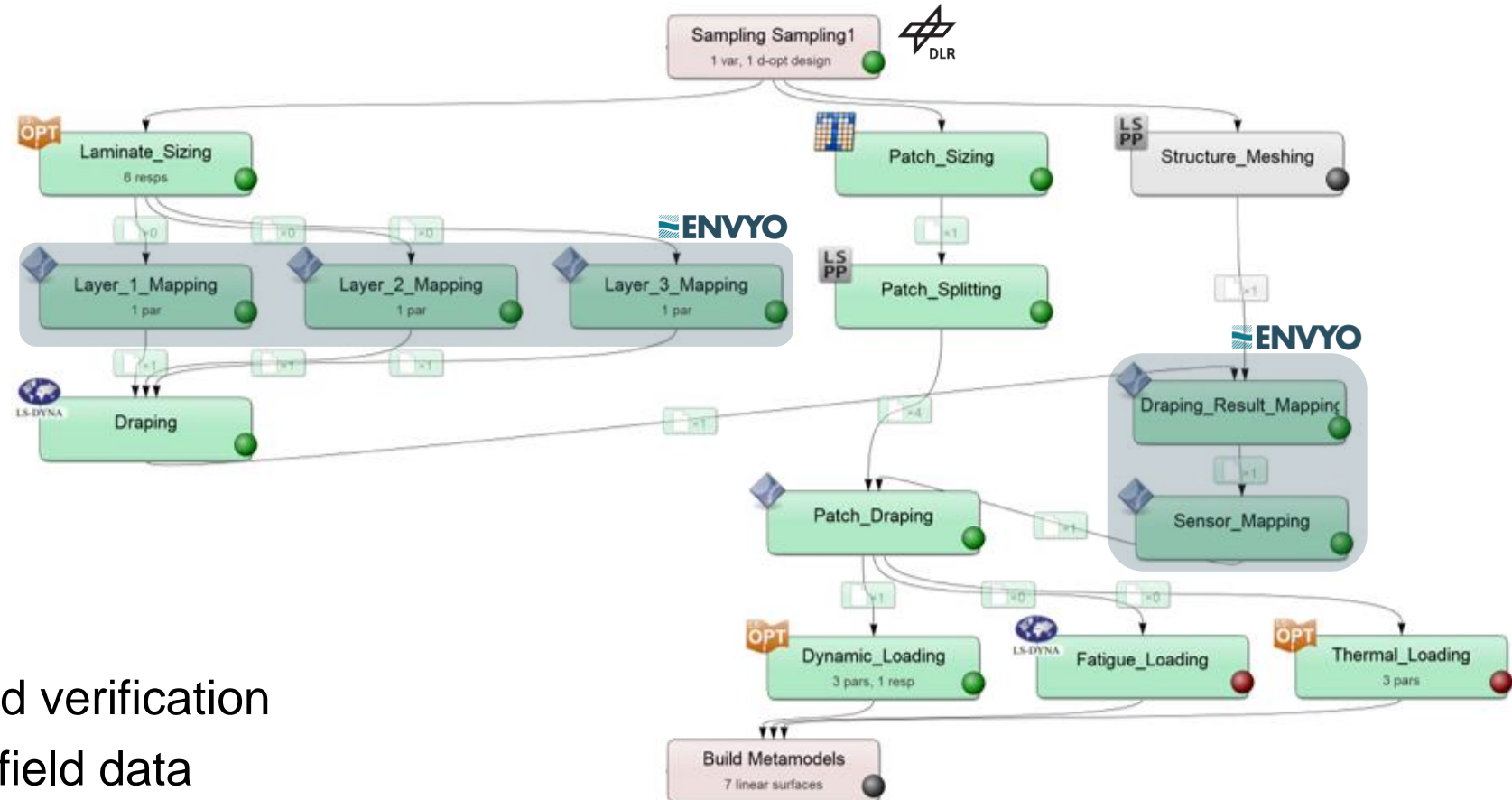
Current virtual DFA process chain

- We can investigate :

- ✓ production tolerances
- ✓ quickly adapt new load cases
- ✓ save CAE cost
- ✓ save material

- We can benefit from:

- Agile product development and verification
- Version updates according to field data
- Investigating predictive maintenance capabilities



Mapping SFRP Properties

- MOLDEX3D – SHELL
- MOLDEX3D – SOLID
- MOLDFLOW – SHELL
- MOLDFLOW – SOLID
- 3DTIMON – SHELL

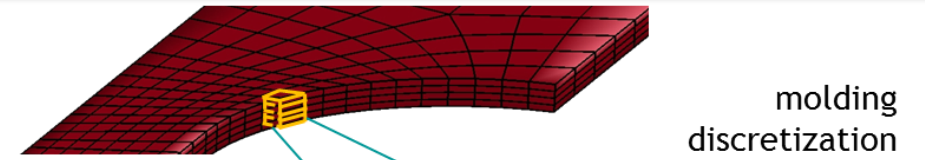
With *INITIAL_STRESS_SHELL
With *INITIAL_STRESS_SOLID



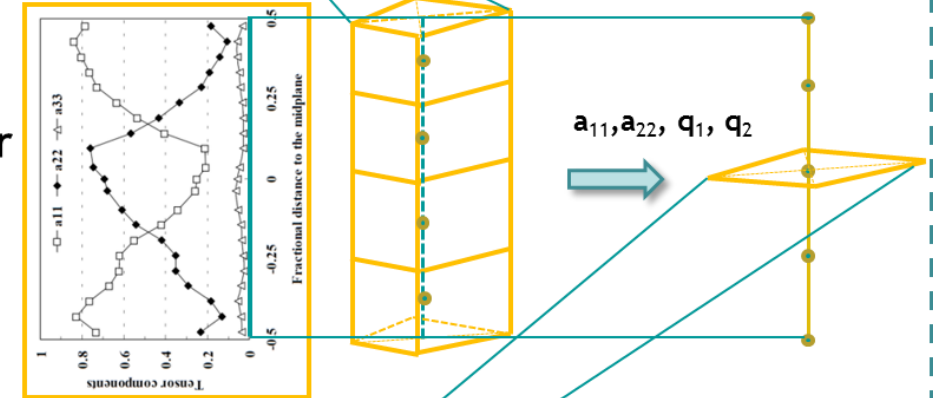
Only one part definition for whole component.

flag	description	variables	number
a_0	material directions	q_1, q_2	2
a_1	anisotropic elastic stiffness	C_{ij}	21
a_2	anisotropic plasticity	r_{00}, r_{45}, r_{90}	3
a_3	hardening curve	LCSS	1

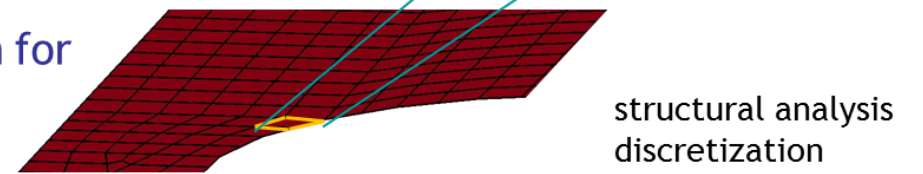
- Process simulation:
fiber orientation / fiber content



- Mapping of fiber orientation tensor (main values und main directions) - fiber content



- Data mapping and homogenization for *MAT_002, *MAT_157, *MAT_215



- Structural analysis using homogenized anisotropic material model (*MAT_157)
- Structural analysis with homogenization in the material model (*MAT_215)

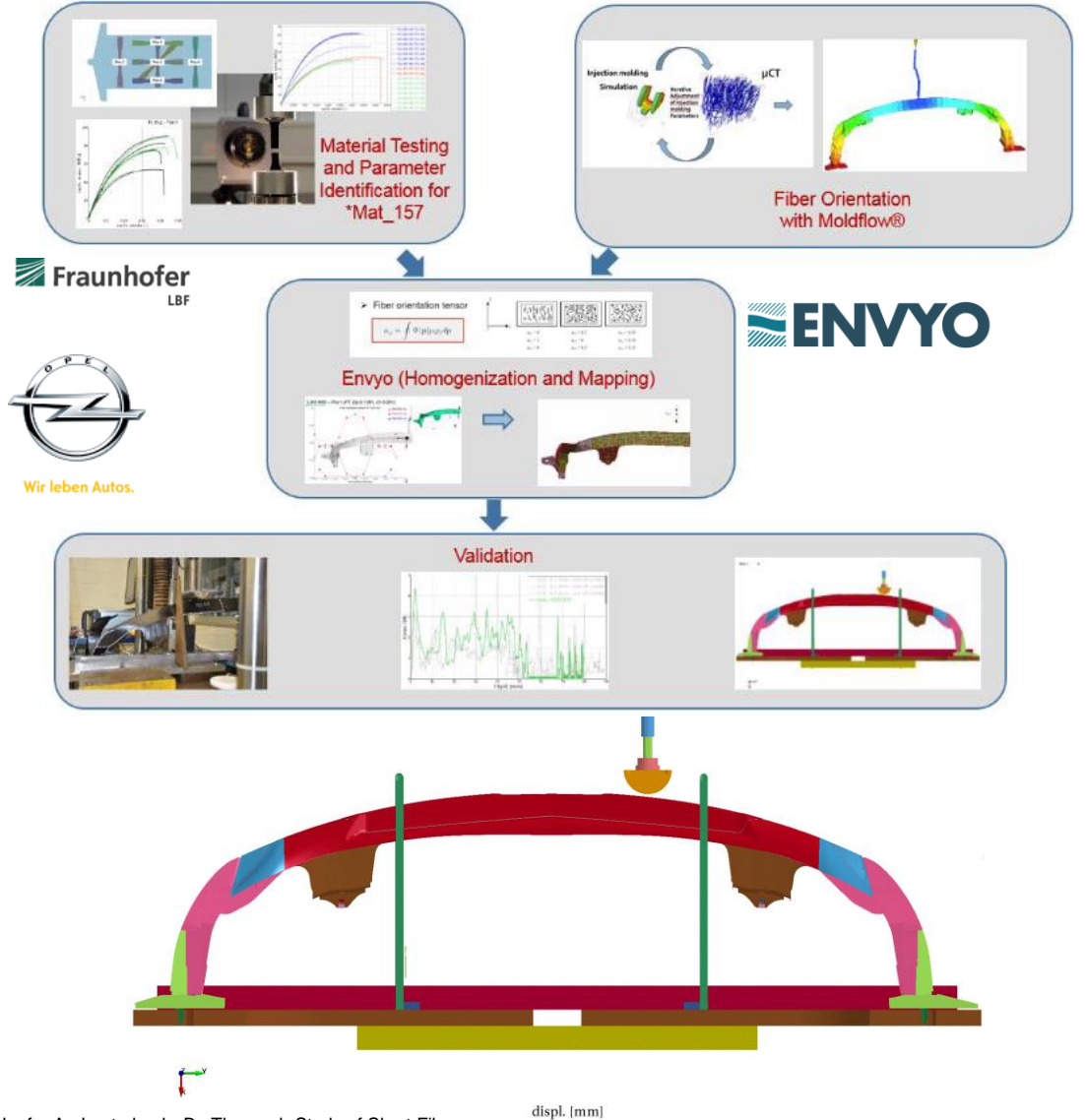
Mapping SFRP Properties

- *MAT_ANISOTROPIC_ELASTIC_PLASTIC (*MAT_157)**
 - Each IP material properties like :
 - Fiber orientations
 - Stiffness components
- can be initialised using ***INITIAL_STRESS (_OPTION)** cards via IHIS flag.
- Multiple homogenization and closure approximation options are available for stiffness computation.
- IP material IDs with respect to user defined material cards for different orientation tensors.

```

*MAT_ANISOTROPIC_ELASTIC_PLASTIC_TITLE
EnvyoOrient:0.6;0.3;0.1
$#-----1|-----2|-----3|-----4|-----5|-----6|-----7|-----8|
$#   mid      ro      sigy    lcss      qr1      cr1      qr2      cr2
$#   c11      c12      c13      c14      c15      c16      c22      c23
$#   c24      c25      c26      c33      c34      c35      c36      c44
$#   c45      c46      c55      c56      c66      r00      r45      r90
$#   s11      s22      s33      s12      aopt      vp      -      macf
$#   xp      yp      zp      a1      a2      a3      -      extra
$#   v1      v2      v3      d1      d2      d3      beta     ihis
$#   xt      xc      yt      yc      sxy      ff12      ff31      ncfail
$#   zt      zc      syz      szx      ff23      ff31

*ELEMENT_SHELL_COMPOSITE
$#-----1|-----2|-----3|-----4|-----5|-----6|-----7|-----8|
$#   eid      pid      n1      n2      n3      n4      n5      n6      n7      n8
$#-----1|-----2|-----3|-----4|-----5|-----6|-----7|-----8|
$#   mid1     thick1     b1      mid2     thick2     b2
$#   .        .        .        .        .        .
  
```



Liebold, C., Haufe, A., Lauterbach, B.: Thorough Study of Short Fiber Reinforced Composites: from Micro-CT to Structural Analysis, Fachkongress Composite Simulation, Fellbach, GER, 2017

Mapping SFRP Properties

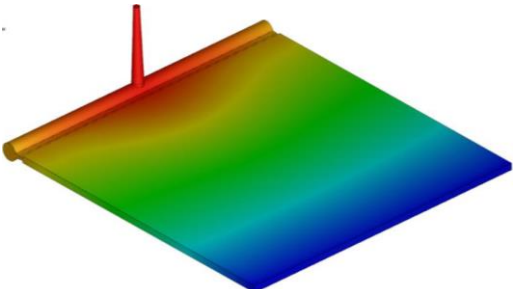
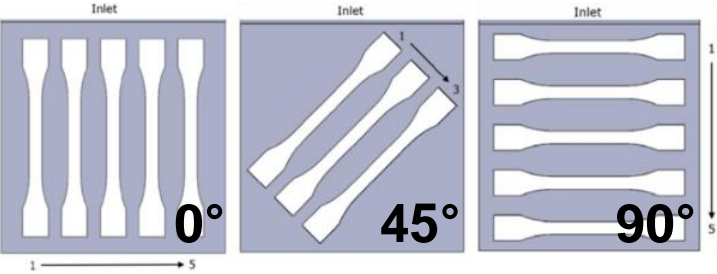
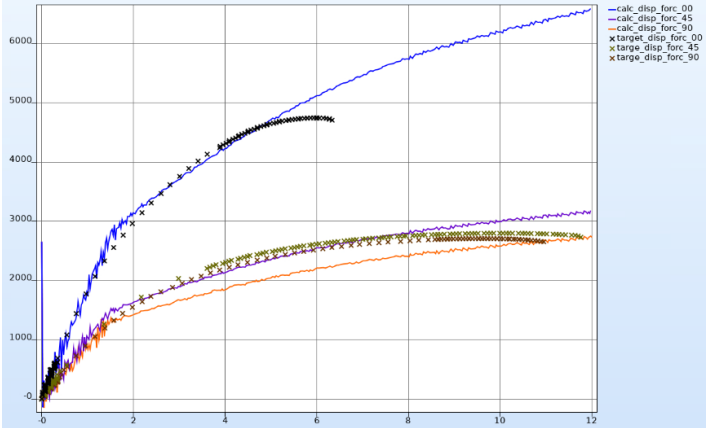


plate molding

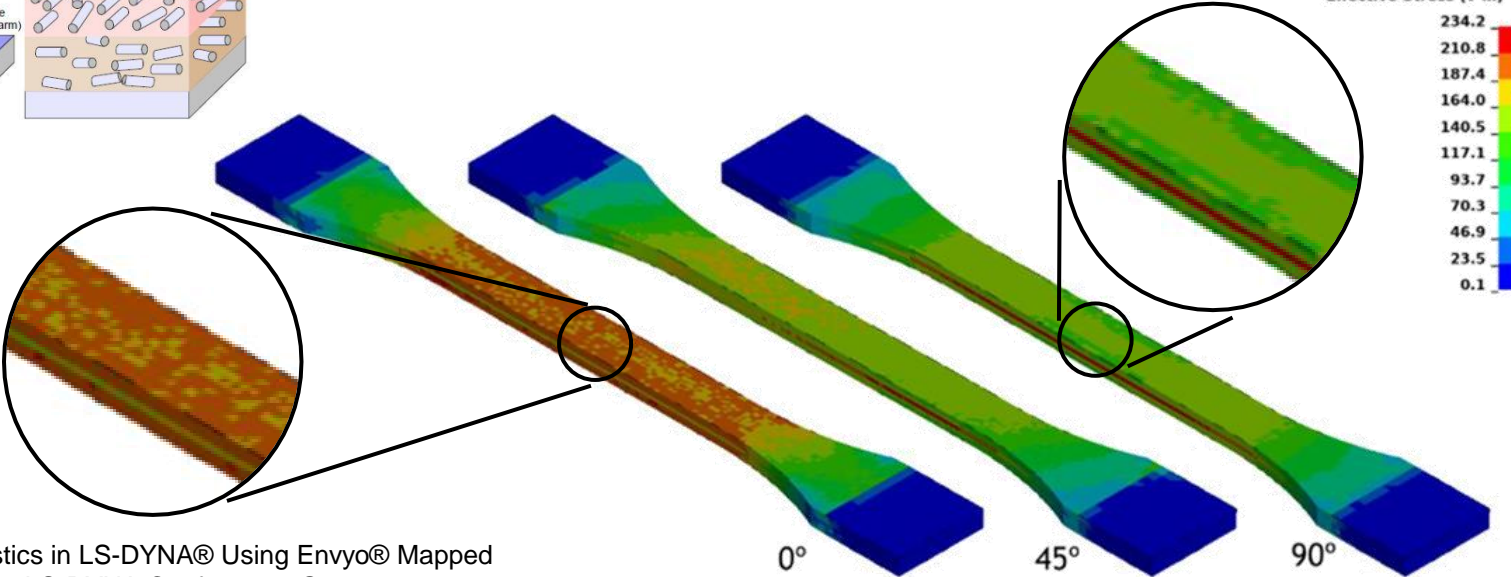
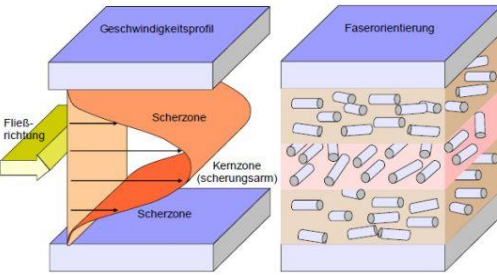


cutting test specimens

- * `MAT_4A_MICROMECH` (*`MAT_215`)
- Fiber orientations can be initialised using `*INITIAL_STRESS (_OPTION)` cards.
- Material has already an ansatz to compute stiffness. (see, LS-DYNA Manual Vol. II)



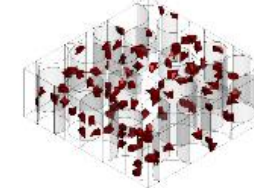
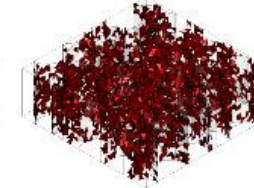
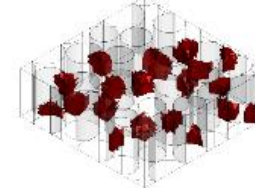
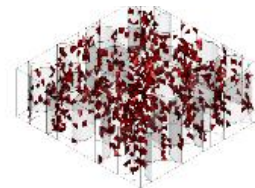
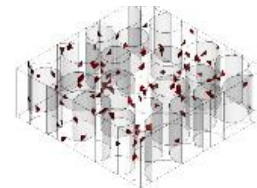
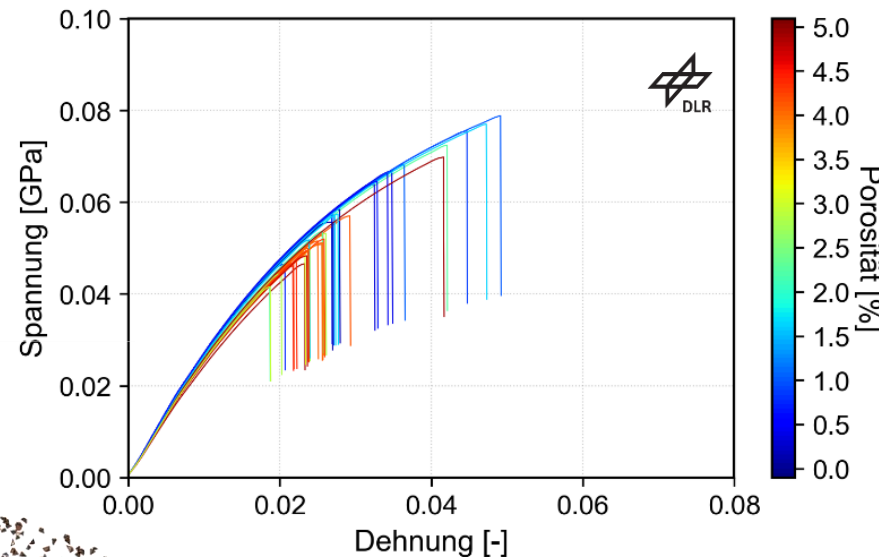
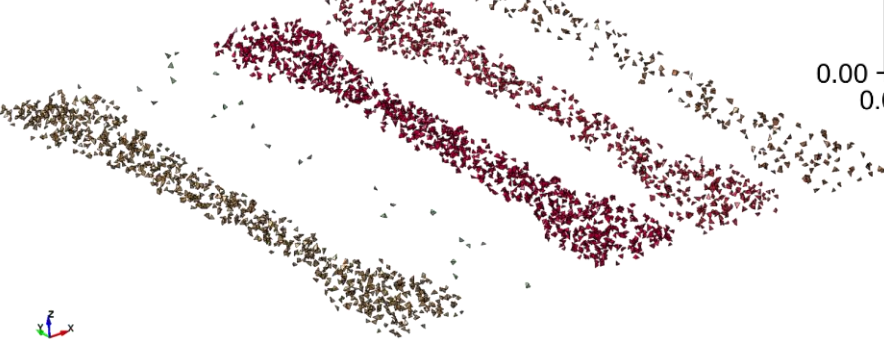
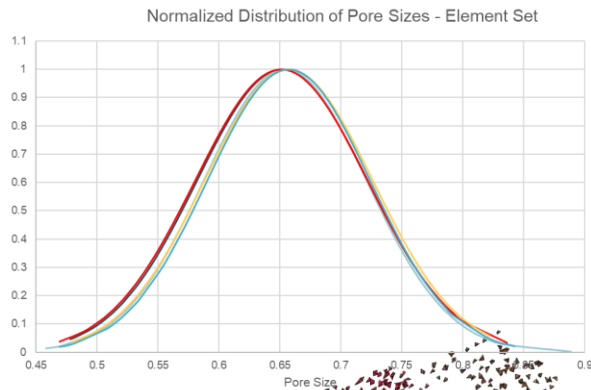
*MAT_215 characterization



Gustavson, M., Aspenberg, D., Stoltz, B.: Simulation of Short Fiber Reinforced Plastics in LS-DYNA® Using Envyo® Mapped Fiber Orientations Obtained from Process Simulation in Moldex3D®, 13th European LS-DYNA Conference, Germany, 2021

Stochastic Initialization

- ENVYO=STOCHASTIC_INIT using *MAT_157
- Mimic pore (or, inclusion) effects in a model by modifying stiffness and/or strength parameters of randomly selected IPs.
- It is completely random; but, reproducible.



```

$#-----
$# Model Scale (Micro ; Meso-Macro)
$#-----
Model_Scale=Meso-Macro
$#-----
$# Source PIDs
$#-----
NumSourcePIDs=1
SourcePID#1=28
$#-----
$# Porosity Parameters
$# Pore_Size=Min Max
Pore_Size=0.1 0.8
$# MaxPorosity=[%]
MaxPorosity=2
$# PoreEffect=ReductionFactor
PoreEffect=0.001
$#-----

```

after a simple modification, this method can handle an „inclusion effect“.

Vinot, M. et. al.: Stochastic modelling of continuous glass-fibre reinforced plastics-considering material uncertainty in microscale simulations, Journal of Composite Materials, 2022

Further Capabilities

Considering Bake-Hardening Effects

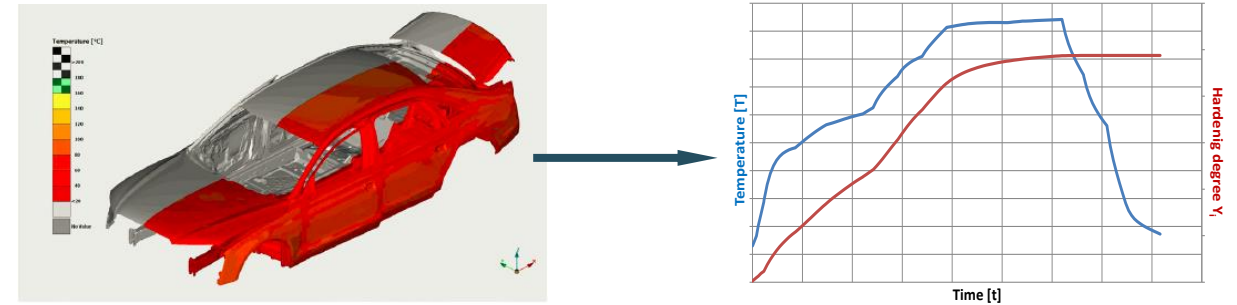
- Calculation of the hardening degree based on the JMAK equation:

$$Y = 1 - \exp\left(-\left(\frac{t}{\tau}\right)^n\right)$$

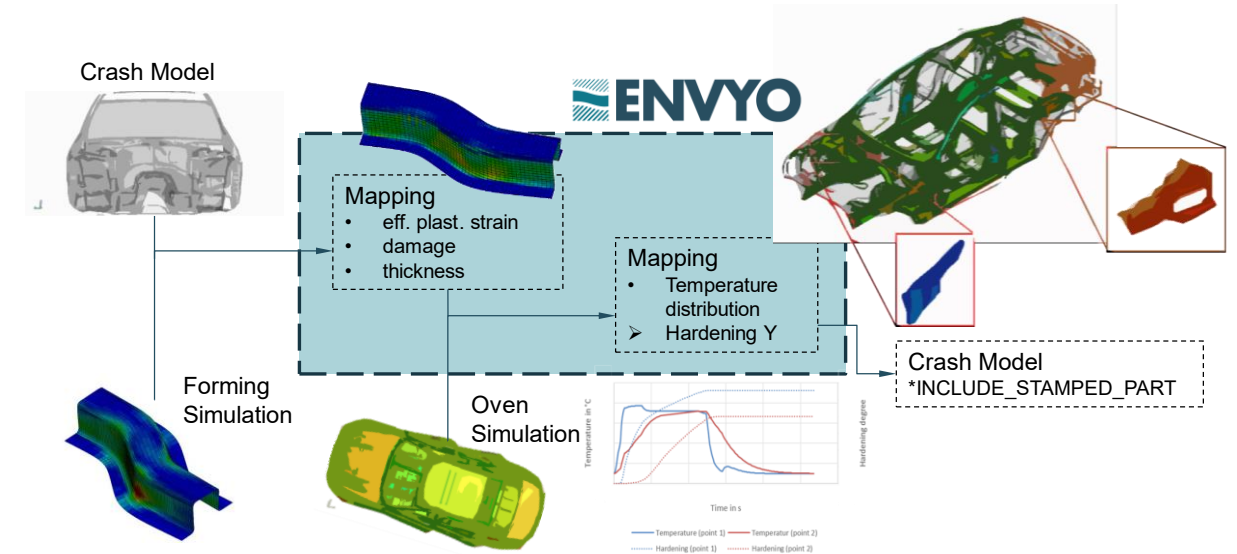
with:

$$\tau(T) = t_0 \exp\left(\frac{Q}{RT}\right)$$

- The parameters n , t_0 and Q can be determined by experiments.
- Temperature profiles can be mapped from THESEUS-OVEN software either for hardening estimation or thermal simulation within LS-DYNA (*MAT_GENERALIZED_PHASE_CHANGE).



L. Greve, G. Krabbenborg, T.K. Eller, M. Andres, B. Geijselaers: Characterization and Modeling of the Deformation and Fracture Behavior of a Bake-Hardenable Aluminum Sheet Alloy Depending on the State of the Hardening and Pre-Strain, Crashmat 2018, Freiburg, GER.



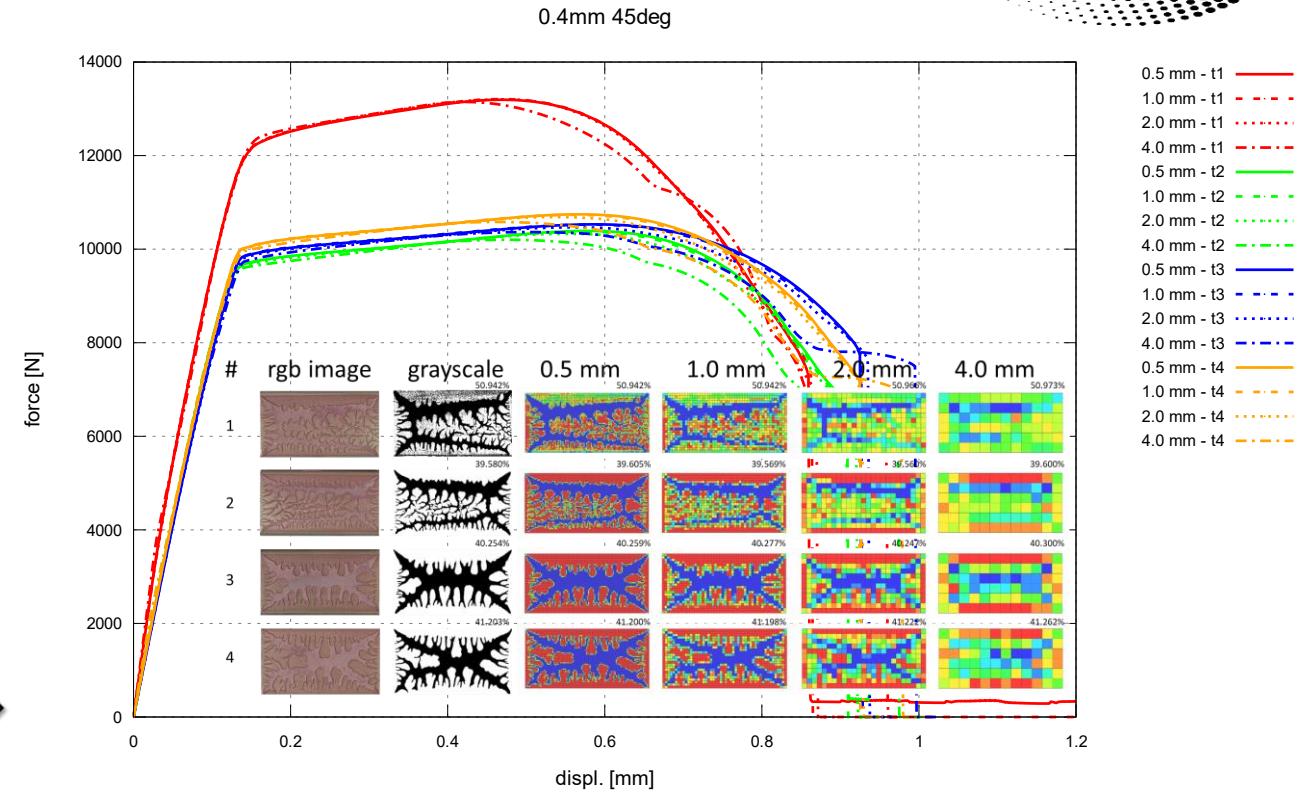
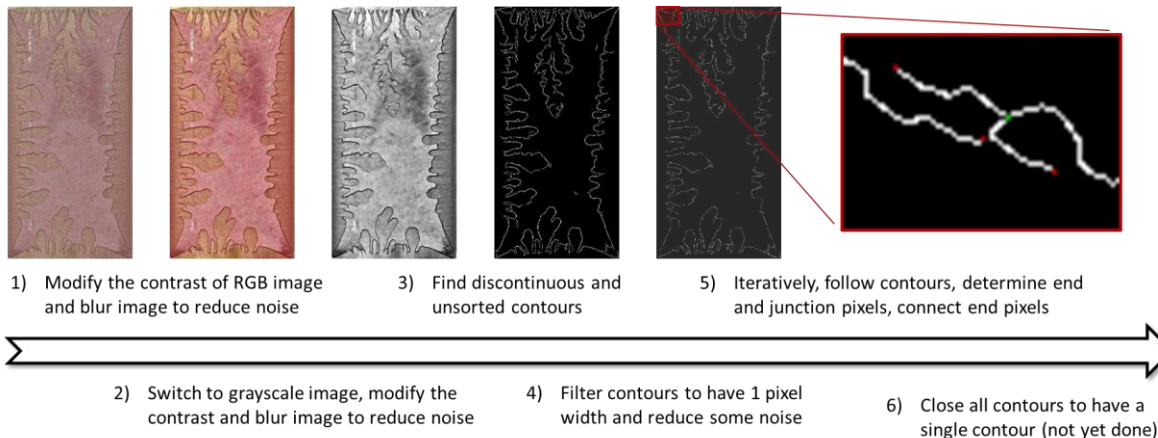
Liebold, C., Wilking, C., Koch, D., Haufe, A., Feucht, M.: Possibilities to consider Bake-Hardening Effects of Aluminum Components in Finite Element Simulations, NAFEMS DACH, virtual event, 2020.



Further Capabilities

Grayscale Mapping

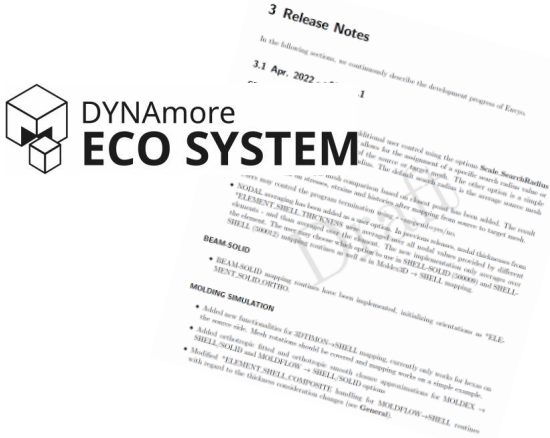
- Different grayscale ranges of an image can be handled using Envyo to map corresponding properties
- Method considers shells, solids and cohesive elements
- OpenCV library has been added to allow for automatic shape detection



Future Development Plan

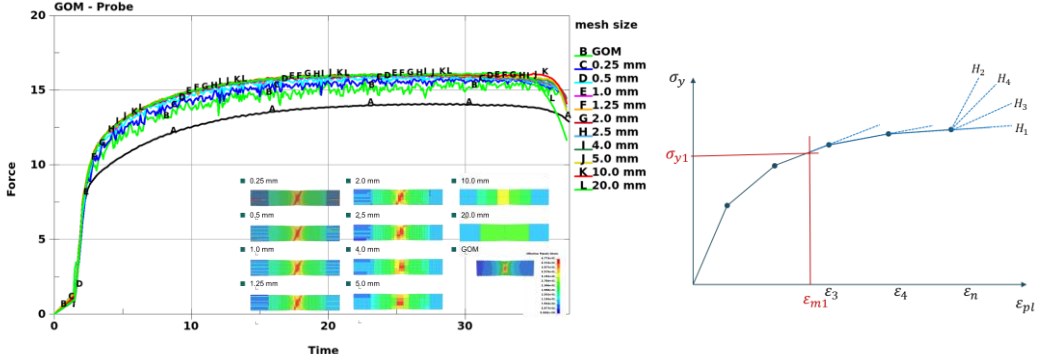


- Full integration into the DYNAmore ECO SYSTEM



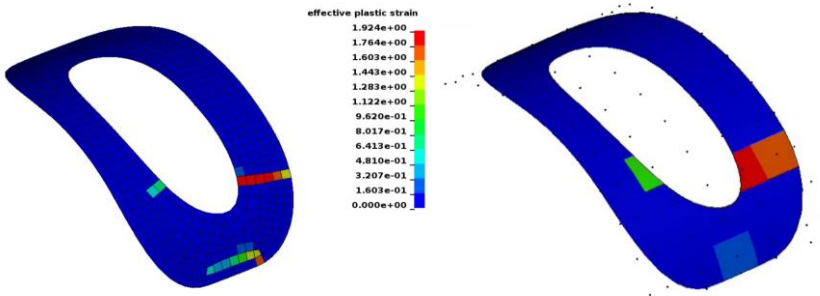
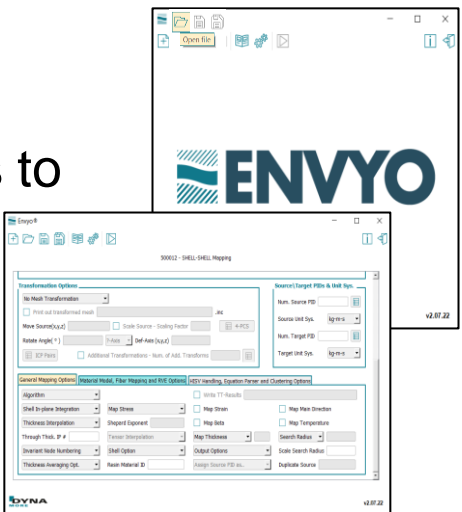
- 180+ customer and development examples inside our QA

- GOM image data consideration for simulation



- Mapping to IGA simulation data

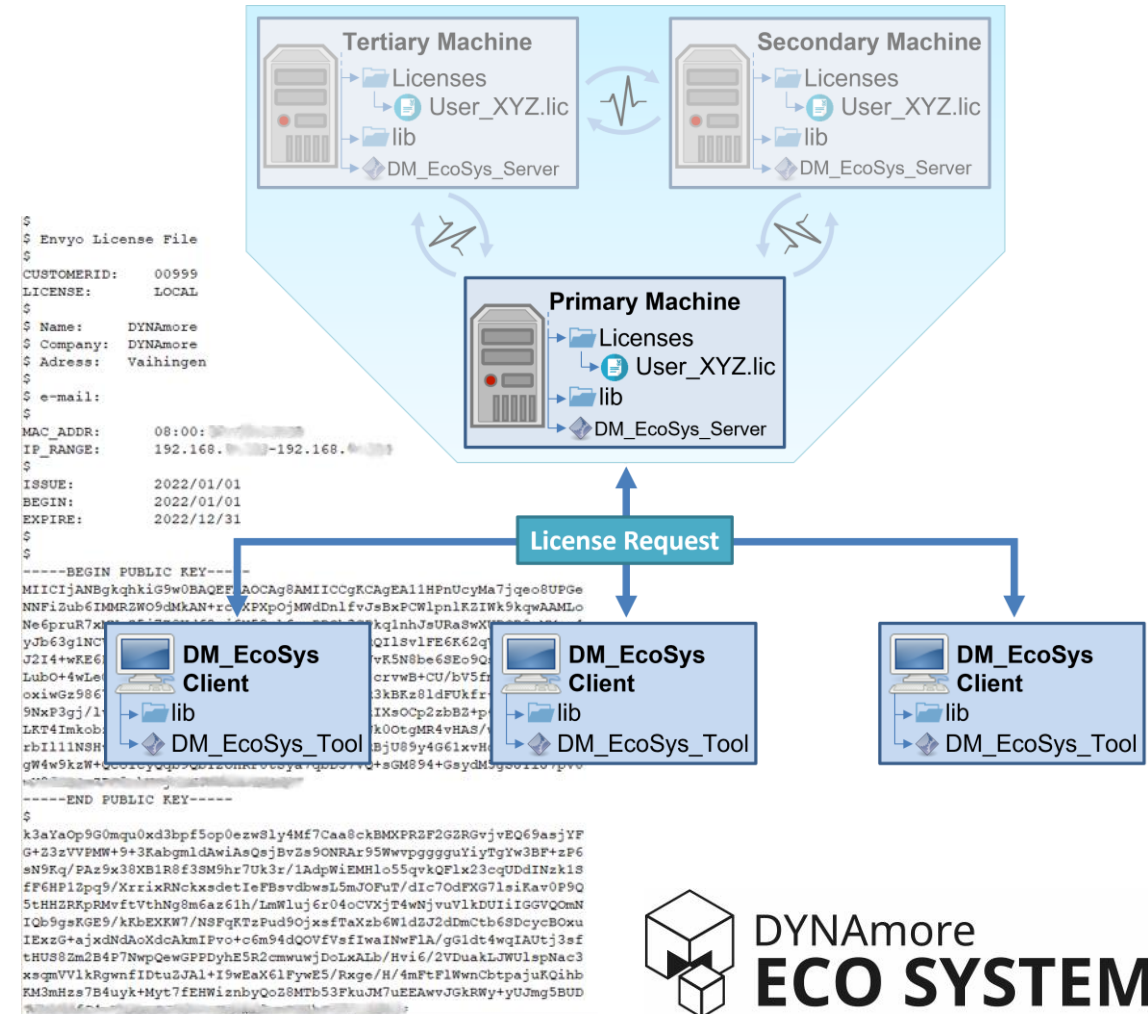
- Improvements on GUI to help our users to define their mapping process



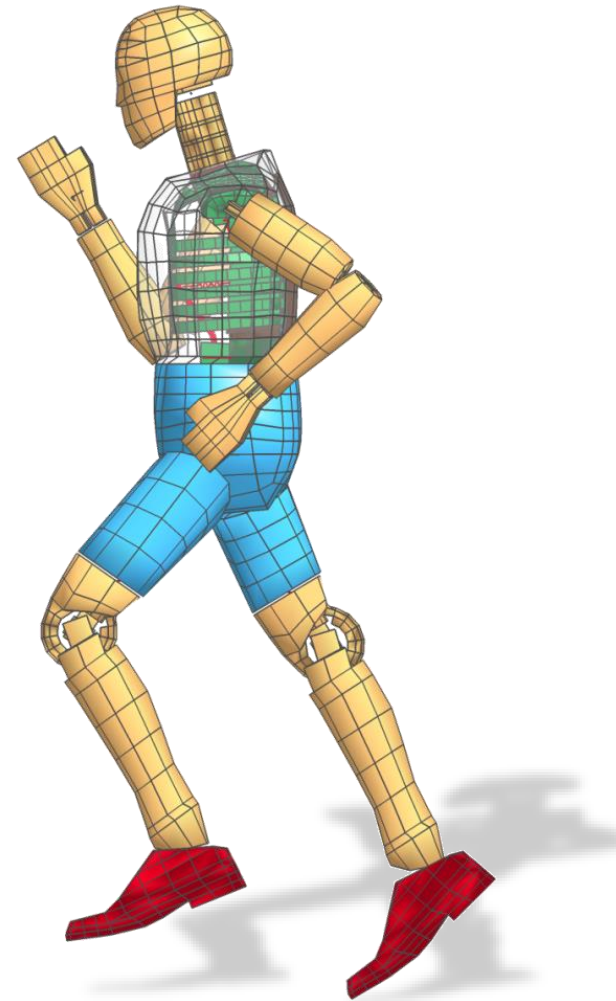
Future Development Plan

New Licensing Scheme

- License file verification will be updated to allow for a more flexible version distribution
- Licensing models will remain:
 - Node-locked
 - Server
 - Server Triad
- Environment variable `DM_ECOSYS_NETWORK` and `DM_ECOSYS_NETWORK_PORTS` have been established to have one server/client system at the customer for the whole DYNAmore Ecosystem



Thank You



DYNAmore GmbH
Industriestr. 2
70565 Stuttgart-Vaihingen
Germany

Tel.: +49 - (0)711 - 459 600 0
Fax: +49 - (0)711 - 459 600 29
info@dynamore.de

www.dynamore.de
www.dynaexamples.com
www.dynasupport.com
www.dynalook.com

© 2022 DYNAmore GmbH. All rights reserved.
Reproduction, distribution, publication or display of the slides and content
without prior written permission of the DYNAmore GmbH is strictly prohibited.

Find us on



DYNAmore worldwide
Germany ■ France ■ Italy ■ Sweden ■ Switzerland ■ USA

ENVYO

